



3-Way Shut Off Valves



2-Way Shut Off Valves



Solenoid Valves



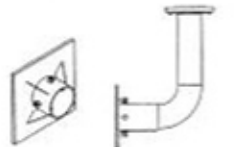
Airline Kits



Airline Check Valves



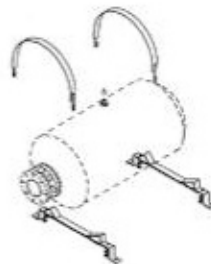
Quick Exhaust Valves



High Temperature Discharge Assemblies



Diffuser Nozzles



Mount Hardware Kits

Accessories

Manual Valves - 2-way manual ball valves used to control the air supply to the Air Blasters and 3-way manual ball valves for manual firing of the Air Blasters.

Solenoid Valves - 3-way normally open solenoid valves for automated firing of the Air Blasters.

Airline Kits - Recommended for trouble-free operation and long life of Air Blasters. Includes airline filter and pressure regulator with gauge. Either standard or auto-drain models available.

Airline Check Valves - Used to prevent accidental firing of Air Blaster if air supply problem causes pressure to drop in Air Blaster fill line.

Quick Exhaust Valves - Standard on all G400 Air Blasters. This patent pending valve was designed specifically for use with Global Air Blasters. It quickly evacuates air from the Air Blaster valve, guaranteeing a full, powerful blast even when the solenoid or 3-way valve is up to 100' from the Air Blaster. This unique valve also insures closure of the Air Blaster valve immediately after the blast. This prevents contamination from entering valve or tank.

High Temperature Diffuser Nozzles - Used to direct air blast for special applications. See inside of back cover for more details.

High Temperature Mount Plate & Discharge Assemblies - Assemblies include mount plate, discharge pipe, mount flange, high temperature gasket, and hardware. Available in weld-on and bolt-on versions.

Mount Hardware Kits - Straps and hardware for supporting tanks when bin wall strength is not adequate.

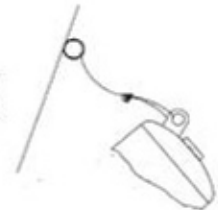
Blaster Master Timer - A micro-controller based sequencing timer used to control the firing time interval and sequence of one or more Air Blasters.

Safety Cable Kits - Includes anchor ring and 14 feet of cable.

Blaster Master Timer



Safety Cable Kit



G400 SERIES HIGH TEMPERATURE AIR BLASTER ACCESSORIES

Discharge	Air Blaster Model	Inlet Port Size	3-Way Valve or 3-Way N/O Solenoid	Quick Exhaust Valve*	Straight High Temp. Discharge Assembly	90° High Temp. Discharge Assembly	Tank Mount Hardware	Safety Cable Kit
4.0"	G400-40-50	3/4"	3/4" NPT	1" QEV	4HT	4HT90S	TMH-12	AB-14
	G400-40-150	3/4"	3/4" NPT	1" QEV	4HT	4HT90L	TMH-20**	AB-14
6.0"	G400-60-300	3/4"	3/4" NPT	1" QEV	N/A	N/A	TMH-24**	AB-14
	G400-60-650	3/4"	3/4" NPT	1" QEV	N/A	N/A	TMH-30**	AB-14

* All G400 Air Blasters include a factory installed 1" Quick Exhaust Valve.

** Two sets of Mount Hardware required for this size Air Blaster.

HIGH TEMPERATURE DIFFUSER NOZZLES

Features

Enhances Air Blaster Performance - Directs air blast along structure walls to enhance the removal of material build-ups.

Designed for High Temperature Environments - Special stainless steel alloy withstands high temperature corrosion including oxidation, sulphidation, carburization, nitridation, and halogen corrosion. Withstands temperatures encountered in kilns operating in excess of 2,000°F (1,100°C).

Longevity - Heavy duty cast design provides long life under high temperatures and exposure to flue gases.

Versatile Design - Patent pending Adjustable Angled Nozzle easily customized at the factory or on-site to provide a wide variety of both nozzle tilt and lateral swivel angles for those hard to reach problem areas.

Ease of Installation - Order to fit exact wall specifications or complete fabrication on-site, using only square pipe cuts, for most customized fits.

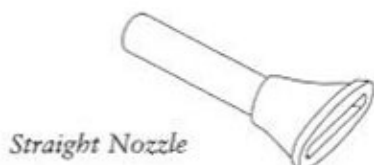
Easy Replacement - Global Manufacturing's High Temperature Mount Plate or Discharge Assemblies allow user to easily replace nozzle without dismounting the Air Blaster.

One Year Warranty

Options

Straight Nozzle - For use in corners to clean adjacent wall. On cylindrical structures, mount at an angle, producing a tangential blast, to effectively clean walls.

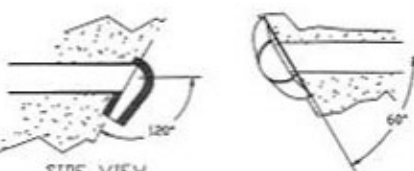
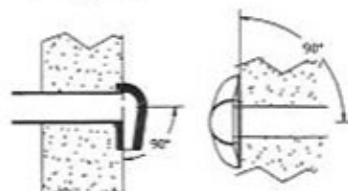
Adjustable Angled Nozzle - Patent pending design provides exact nozzle angle for many hard-to-reach locations. Nozzle tilt angles from 60-120° and lateral swivel angles up to 30° are available. Order factory-made to the desired angle or complete fabrication on-site for custom fits.



Straight Nozzle



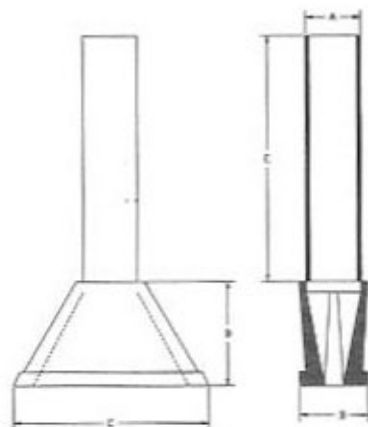
Adjustable Angled Nozzle



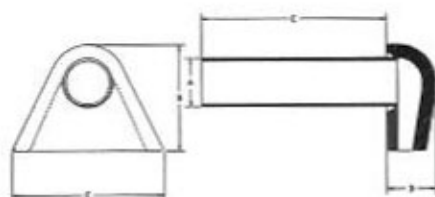
SIDE VIEW

TOP VIEW

Adjustable Nozzle Tilt Limits Adjustable Nozzle Swivel Limits



Straight Nozzle



Adjustable Angle Nozzle

Operating Requirements

For use with any 4" discharge Air Blaster system.

DIMENSIONS							
Model	Weight	A	B	C	D	E	
		Discharge Pipe Size	Length	Width	Depth	Pipe Length	
	LBS	IN	IN	IN	IN	IN	
	KG	MM	MM	MM	MM	MM	
Nozzle with Pipe	4HTP- Straight	61	4.0	7.7	14.3	5.0	18
		27	102	196	363	127	457
Nozzle without pipe	4HTPA- Angled	74	4.0	9.9	14.1	4.3	18
		33	102	251	358	108	457
Mount Plate	4HT- Straight	44	4.0	7.7	14.3	5.0	-0
		20	102	196	363	127	0
Mount Plate	4HTA- Angled	57	4	9.9	14.1	4.3	0
		26	102	251	358	108	0
Mount Plate	4HTW	23	4.0	12	12	4.0	0.5
		10	102	305	305	102	13

*Note: Must have 6" x 4" reducer coupling options for G400-60-300 and G400-60-650 models.