

# Standard for over 50 Years

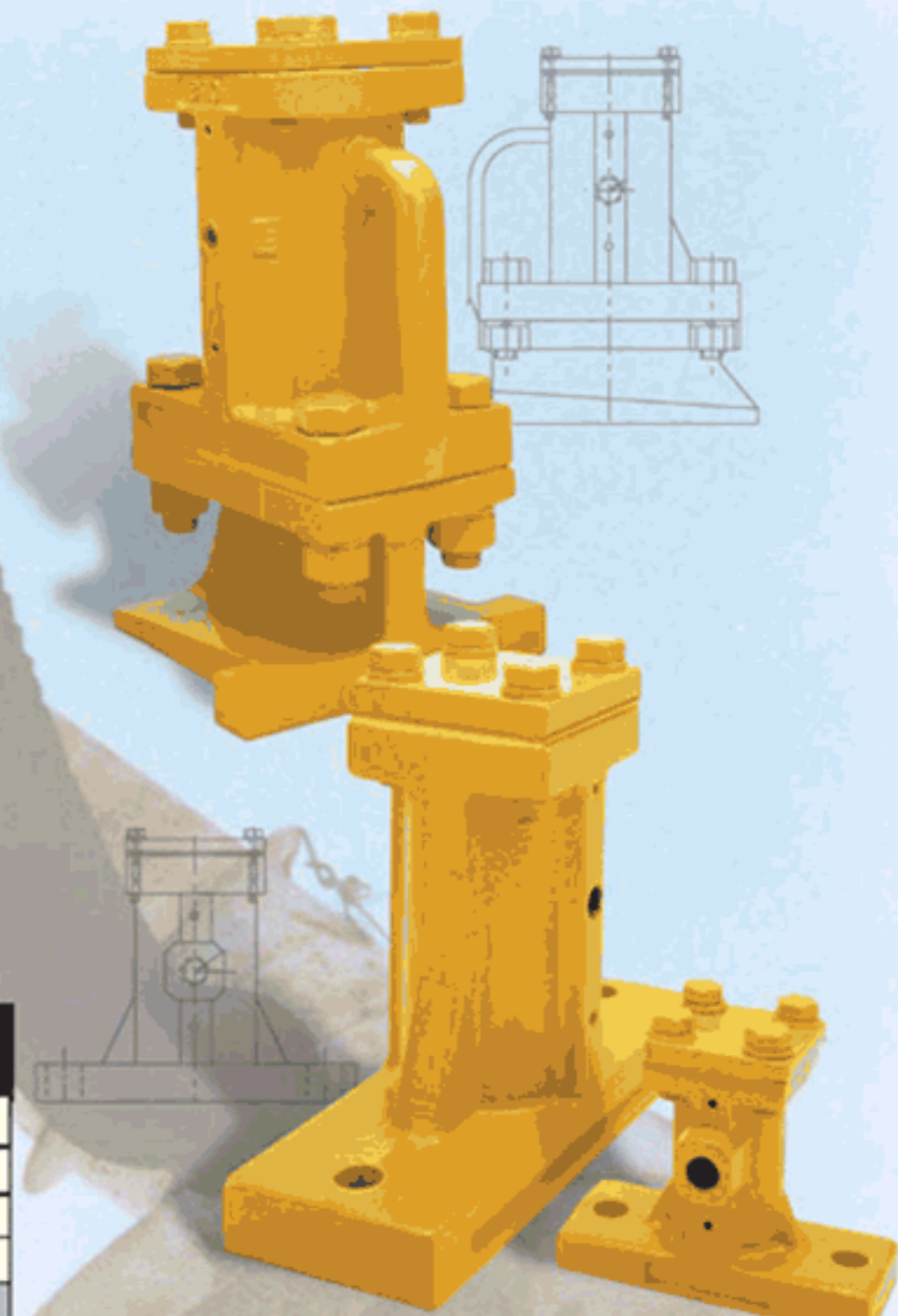
## P-Series Piston Vibrators

**Energy Efficient** - Low air consumption compared to rotary type vibrators.

**Durable** - Tough ductile iron housing with chrome plated piston. Chrome plating protects piston from dirt and debris which can scratch and score the piston making it inoperable. Plating also prevents rust that may occur during long periods of non-use.

**Long Life Railcar Models** - Piston and housing bore are coated with Teflon® for protection from debris and to decrease the chance of failure due to inadequate lubrication.

**Trouble-Free Operation** - No maintenance required if filtered, lubricated air is used.



### PERFORMANCE DATA FOR P-SERIES PISTON VIBRATORS

VIBRATOR MODEL	START UP	AIR PRESSURE								
		20 PSI (1.4 BAR)			40 PSI (2.8 BAR)			60 PSI (4.1 BAR)		
		SPEED	FLOW	FORCE	SPEED	FLOW	FORCE	SPEED	FLOW	FORCE
		PSI	CFM	LBS	CPM	CFM	LBS	CPM	CFM	LBS
BAR	LPM	KN	LPM	KN	LPM	KN	LPM	KN		
<b>IMPACT</b>										
P-1-IM	15-20	4000	1.5	250	6100	2.0	900	8100	3.0	1240
			42	1.1		57	4.0		85	5.5
P-1 <sup>1</sup> / <sub>4</sub> -IM*	15-20	3400	2.0	375	4600	3.5	1440	5750	5.5	2250
			57	1.7		99	6.4		156	10.0
P-1 <sup>5</sup> / <sub>8</sub> -IM	15-20	3520	2.2	1450	4500	5.0	1770	5600	8.0	2270
			62	6.4		142	7.9		227	10.1
P-2-IM*	15-20	2750	2.2	1890	4000	5.5	2370	5350	9.0	2870
			62	8.4		156	10.5		255	12.8
P-3-IM*	15-20	2250	7.5	4000	3000	16.5	4600	3750	25.5	5600
			212	17.8		467	20.5		722	24.9
P-4-IM*	15-20	1625	10.0	6200	2350	20.5	7600	3100	30.5	9700
			283	27.6		580	33.8		864	43.1
<b>AIR-CUSHIONED</b>										
P-1 AC	15-20	2600	1.5	16	3250	2.0	32	3950	2.2	48
			42	0.1		57	0.1		62	0.2
P-1 <sup>1</sup> / <sub>4</sub> -AC	15-20	2350	2.0	24	2900	3.5	48	3400	6.0	72
			57	0.1		99	0.2		170	0.3
P-1 <sup>5</sup> / <sub>8</sub> -AC	15-20	1650	2.0	41	2000	5.0	82	2400	7.5	123
			57	0.2		142	0.4		212	0.5
P-2-AC	15-20	1600	2.2	63	1950	5.0	126	2250	8.5	189
			62	0.3		142	0.6		241	0.8
P-3-AC	15-20	1400	6.5	141	1700	13.5	282	1950	20.5	423
			184	0.6		382	1.3		580	1.9
P-4-AC	15-20	1100	9.5	251	1300	20.0	502	1500	30.0	753
			269	1.1		566	2.2		850	3.3
<b>RAILCAR</b>										
PRR-1300	15-20	1400	6.5	141	1700	13.5	282	1950	20.5	423
			3.1	627		6.4	1254		9.7	1882
<b>MATCHPLATE</b>										
MP- <sup>3</sup> / <sub>4</sub> -IM								12400*	3.0	
								*@70PSI	1.4	
MP-1-IM								10300	3.5	
								*@70PSI	1.7	
MP-1 <sup>1</sup> / <sub>4</sub> -IM								8150	3.8	
								*@70PSI	1.8	
MP-2-IM								5500	8.3	
								*@70PSI	3.9	

All force data exceeding 4800 LBS is estimated.

\* Available as Timed Impact Models (TMD) .

Springs available upon request. Use a spring if vibrator is mounted horizontally or the position of the vibrator is at an angle of less than 15° off the horizon. Occasionally the piston will stop in a middle of a cycle, which will block ports, making it difficult to restart. Springs push the piston back to the starting position.

### P-Series Piston Vibrators are available in either:

**Impact Models (IM)** - The piston strikes the base of the vibrator producing the greatest amount of force.

**Air-Cushioned Models (AC)** - Quieter than impact models because a cushion of air eliminates metal-to-metal impact.

**Timed Impact Models (TMD)** - Delivers one impact at a time on a predetermined signal. Controlled by an electric, electronic, or pneumatic timer, or a programmable controller.

**Railcar Models (PRR)** - Comes with a wedge mount bracket to fit railcar pockets. Pistons and bores are Teflon® coated for protection against contaminants and inadequate lubrication.

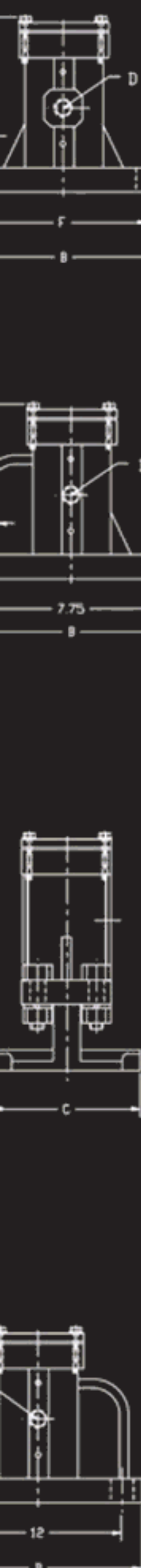
**Matchplate Models (MP)** - Impact type with universal base mount used on foundry matchplates. Comes with an internal spring which allows any mount orientation.

### Operating Requirements

20-60 PSI (1.4-4.1 BAR) depending on model  
1.5-30 CFM (43-850 LPM)

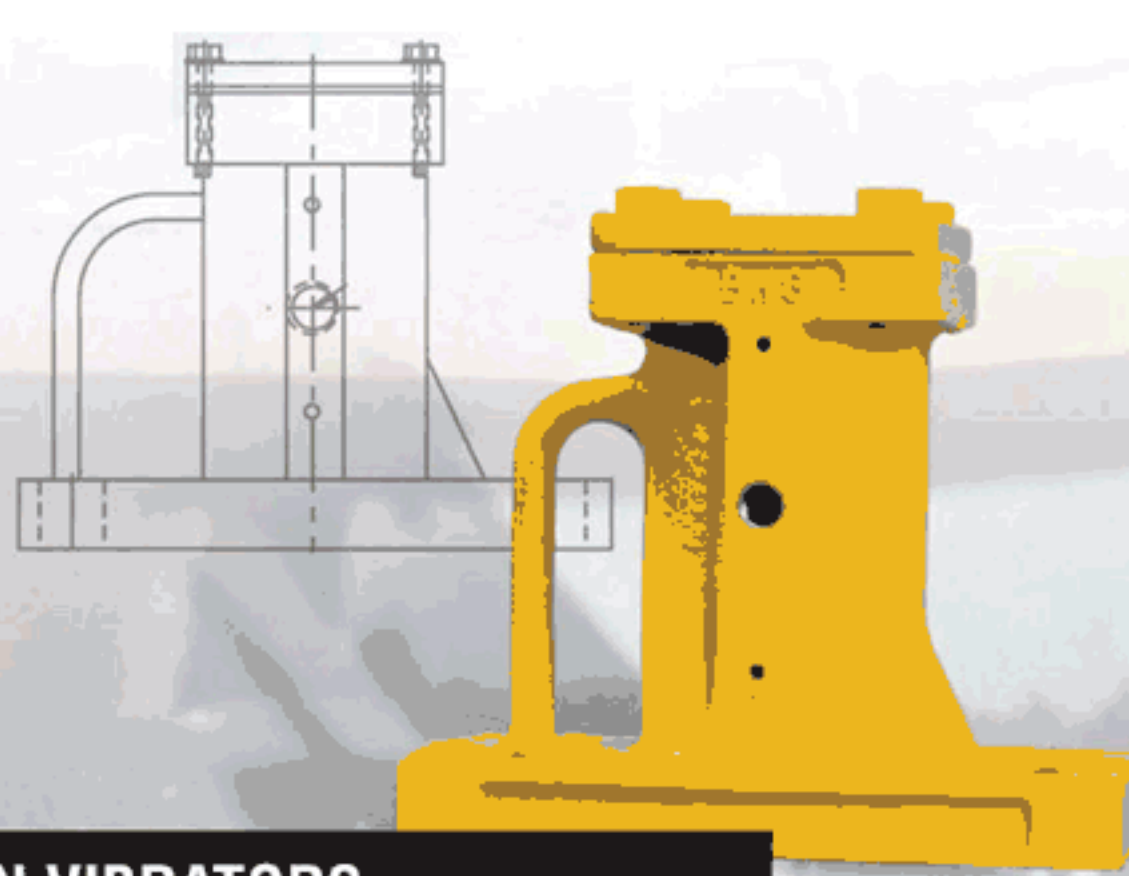
Requires filtered, lubricated air.

**P-Series**



# Pneumatic piston vibrators with durable iron unibody construction and chrome or Teflon® coated pistons.

Simple to use - Simple to install

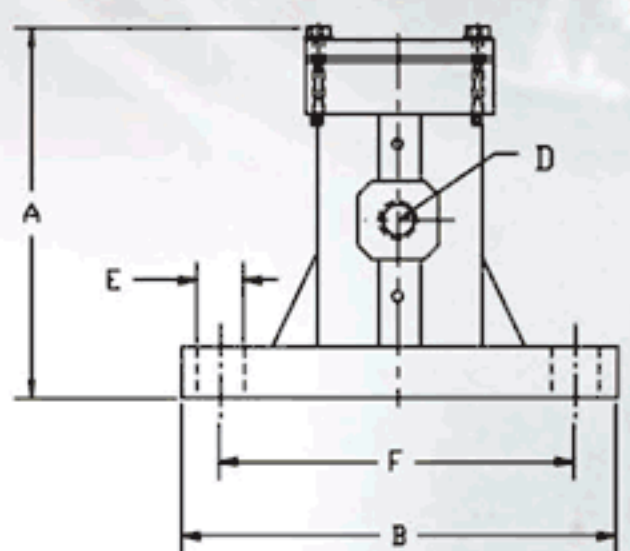


**P-Series**

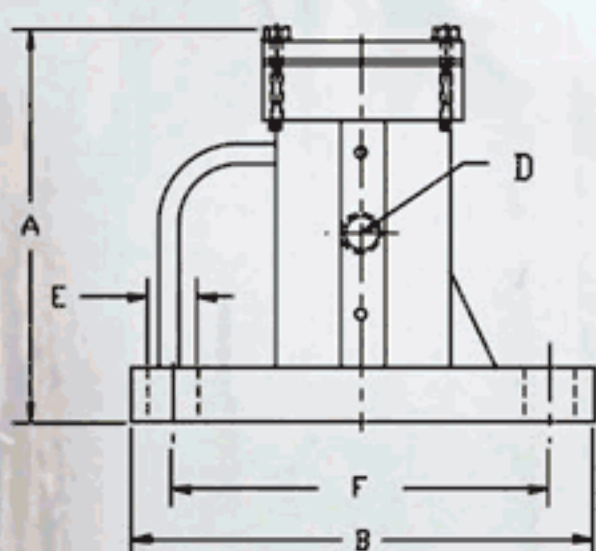
## DIMENSIONS FOR P-SERIES PISTON VIBRATORS

MODEL AC or IM	WEIGHT	A	B	C	D	E	F
		HEIGHT	LENGTH	WIDTH	INLET	BOLT HOLE	BOLT CENTERS
	LBS	IN	IN	IN	IN	IN	IN
	KG	MM	MM	MM	NPT	MM	MM
P-1	4.00	3.88	4.50	2.00	1/4	1/2	3.50
	1.81	99	114	51		13	89
P-1 1/4*	9.00	5.63	6.00	2.50	1/4	1/2	4.50
	4.08	143	152	64		13	114
P-1 5/8	19.00	7.50	9.50	3.25	1/4	5/8	7.50
	8.62	191	241	83		16	191
P-2*	19.00	7.50	9.50	3.25	1/4	5/8	7.50
	8.62	191	241	83		16	191
P-3*	50.00	9.63	10.50	5.00	3/8	7/8	7.75 X 3.25
	22.68	245	267	127		22	197 X 83
P-4*	104.00	12.00	14.5	6.50	1/2	1	12 X 4
	47.17	305	368	165		25	305 X 102
PRR-1300	72.00	14.38	8.00	7.38	3/8	WEDGE BASE	6.875 X 6.125
	32.66	365	203	187			175 X 156
MP-3/4	2.00	5.38	1.75	1.25	1/4	3/8	N/A
	0.91	137	44	32		10	
MP-1	4.00	5.88	2.00	1.50	1/4	1/2	N/A
	1.81	149	51	38		13	
MP-1 1/4	7.00	5.63	2.50	2.00	1/4	1/2	N/A
	3.18	143	64	51		13	
MP-2	15	10.63	3.38	2.88	1/4	3/4	N/A
	6.80	270	86	73		19	

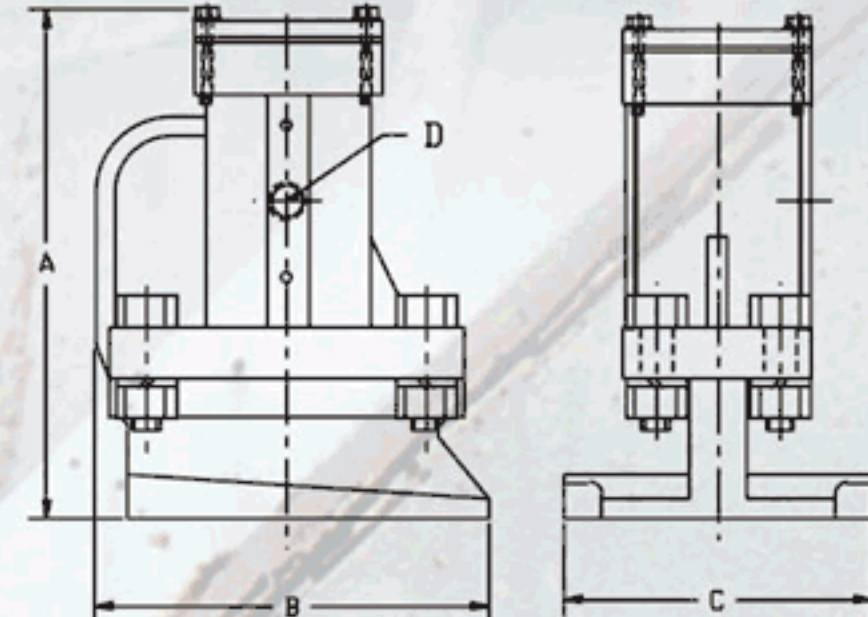
\*Available as Timed Impact Models



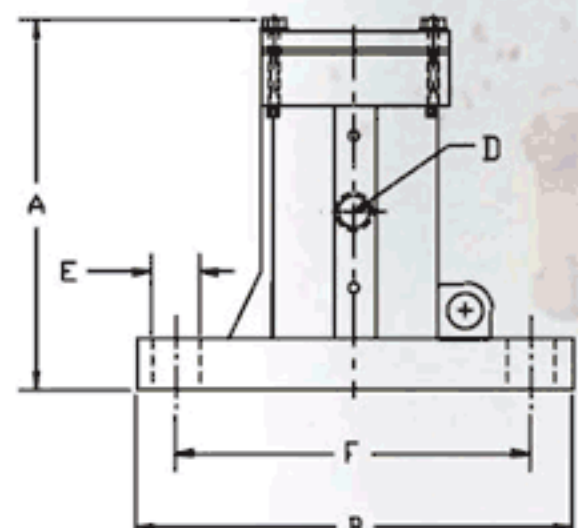
**P-1 & P-1 1/4 + TMD-1 1/4**



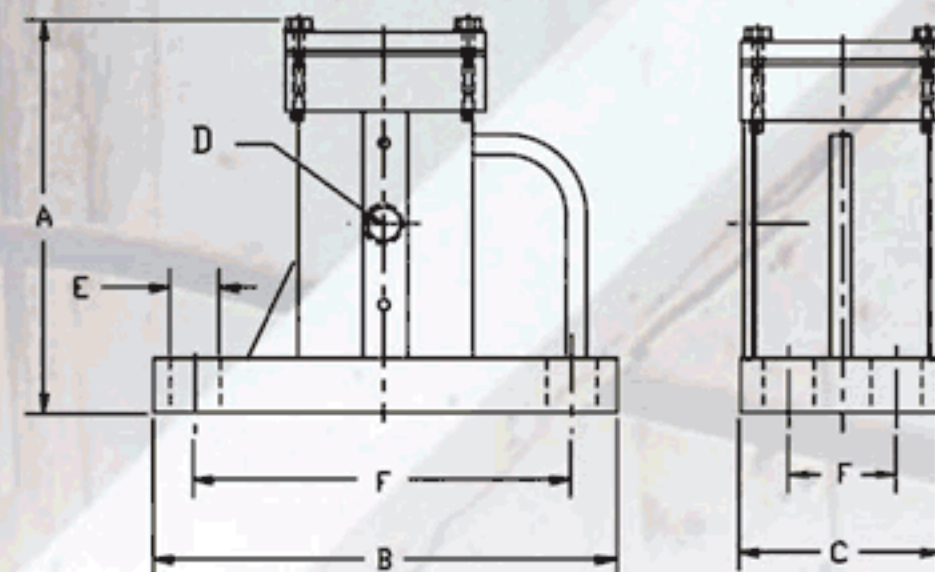
**P-3 + TMD-3**



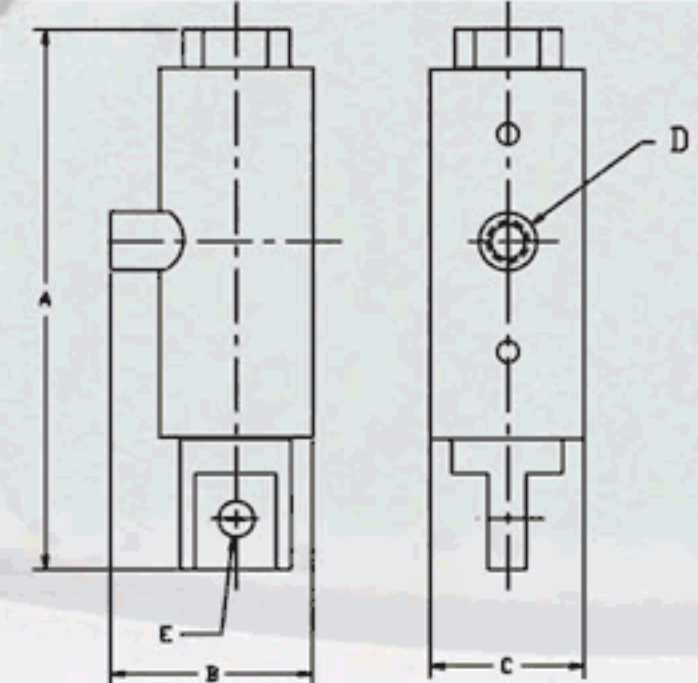
**PRR-1300**



**P-1 5/8 & P-2 + TMD-2**



**P-4 + TMD-4**



**MP**