



# Knockers VKL si

**For powerful impacts at low operating pressure.**

## Properties

- Wide range of settings for impact power and interval
- Impact force can be set pneumatically and/or by mechanical means
- Flexible range of applications

## Typical applications

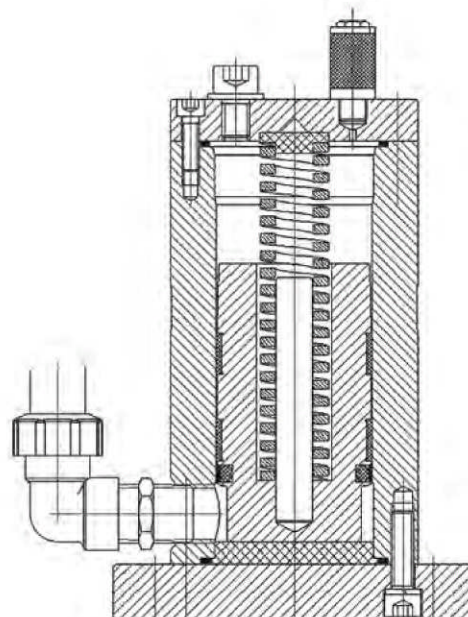
Wide range of uses, including in the open air, and in wet or explosion risk areas. For knocking off material adhesions on container walls, such as in silos, hoppers, filter outlets, reactors and pipelines.

## Construction

Compressed air pushes a piston against a spring. When air pressure is rapidly vented, the piston shoots against a baffle plate. Mechanical impact regulation is provided by limiting the piston's stroke by means of an inserted threaded rod. Knocker housing made from aluminium, baffle plate from impact resistant plastic.

Technical Data in **PSI, LBS, CF**

Model	Pressure PSI	Work/ Impact Nm	Impulse/ Impact Ns	Air consumption CF min <sup>-1</sup>	For Wall thickness up to inches	Weight Lbs
VKL 100 si	50.75-108.75	10-50	1-10.5	0.02-0.04	0.20	9.92
VKL 150 si	65.25-101.5	50-110	1-28.5	0.04-0.06	0.32	20.94
VKL 200 si	60.9-108.75	100-200	1-57.5	0.08-0.12	0.47	32.63



Housing made of hard-anodized aluminium alloy  
Steel piston  
Baffle plate made of impact-resistant plastic

**CHICAGO VIBRATOR PRODUCTS**  
**WESTMONT, IL 60559**

**1-800-842-7284 USA & CANADA**  
**1-630-920-9411**