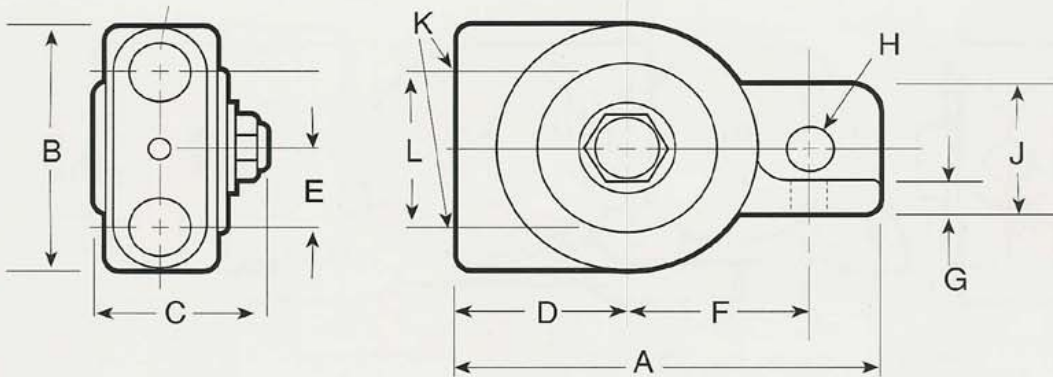


Dual mount (1 bolt; parallel or right angle to work) with inline body inlet/exhaust ports (NPT) makes the VBA series ideal for mounting in a wide variety of applications which require high frequency and moderate force.

Available in 5 sizes of Cast Ductile Iron, and 3 sizes of Cast Aluminum Alloy housing.

| PERFORMANCE DATA | | | | | | | | | | |
|------------------|-----------|--------|--------|--------------|--------|--------|-----------------|--------|--------|--------|
| MODEL | FREQUENCY | | | OUTPUT FORCE | | | AIR CONSUMPTION | | | WEIGHT |
| | 30 PSI | 60 PSI | 90 PSI | 30 PSI | 60 PSI | 90 PSI | 30 PSI | 60 PSI | 90 PSI | |
| | VPM | VPM | VPM | LBS | LBS | LBS | CFM | CFM | CFM | |
| VBA-100 | 19000 | 25000 | 32000 | 29 | 48 | 78 | 2 | 6 | 9 | 8 oz. |
| VBA-130 | 14000 | 19000 | 24000 | 38 | 65 | 118 | 3 | 7 | 11 | 10 oz. |
| VBA-160 | 12500 | 16000 | 19000 | 79 | 121 | 197 | 3 | 9 | 12 | 16 oz. |



| DIMENSIONS | | | | | | | | | | | | |
|------------|----------|------|------|------|------|------|------|------|------|------|----------|------|
| MODEL | | A | B | C | D | E | F | G | H* | J | K** | L |
| VBA-100 | VBA-100A | 3.12 | 1.87 | 1.28 | 1.25 | 0.59 | 1.37 | 0.25 | 0.31 | 0.88 | 1/8" NPT | 1.18 |
| VBA-130 | VBA-130A | 3.75 | 2.19 | 1.37 | 1.63 | 0.63 | 1.56 | 0.31 | 0.37 | 1.13 | 1/4" NPT | 1.25 |
| VBA-160 | VBA-160A | 4.13 | 2.56 | 1.56 | 1.69 | 0.81 | 1.81 | 0.38 | 0.37 | 1.25 | 1/4" NPT | 1.62 |

A = Aluminum Alloy Housing

* Bolt Size

** Pipe Tap Size