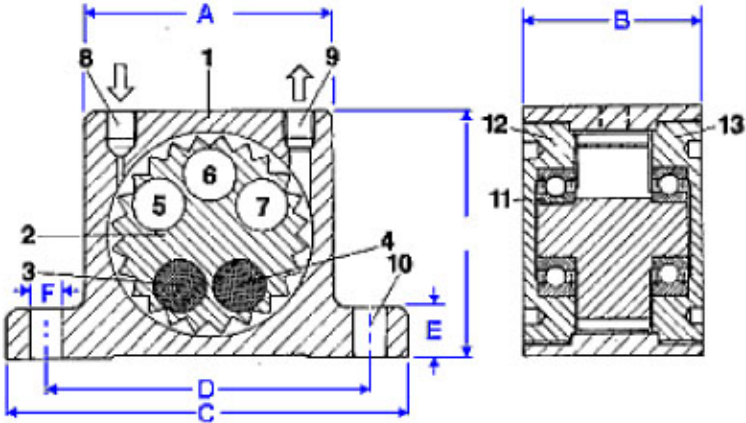




VGT Series Turbine Vibrator



Construction:

- 1 - Extruded aluminum alloy body
- 2 - Aluminum turbine wheel, hard coated
- 3-4 - High density mass for positive moment
- 5-7 - Cavities for negative moment
- 8 - Air inlet (BSP thread, will accept NPT)
- 9 - Air exhaust (BSP thread, will accept NPT)
- 10 - Base mounting holes
- 11 - Special pre-lubricated shielded bearings
- 12 - Hard coated aluminum end plate with left-handed thread
- 13 - Hard coated aluminum end plate with right-handed thread

Dimensions:

Model	A		B		C		D		E		F		G/H BSP Thread	Weight	
	mm	inches	mm	inches	mm	inches	mm	inches	mm	inches	mm	inches		kg	Lbs
VGT-4 VGT-6	40	1.58	28	1.10	70	2.76	56	2.21	10	0.41	6	0.24	1/8"	0.167	.037
VGT-8 VGT-10 VGT-10-S	50	1.97	33	1.30	86	3.38	68	2.68	12	0.47	7	0.27	1/8"	0.250 0.255 0.263	0.55 0.56 0.58
VGT13 VGT-16 VGT-16-S	65	2.56	42	1.65	113	4.45	90	3.54	16	0.63	9	0.35	1/4"	0.565 0.580 0.614	1.24 1.28 1.35
VGT20 VGT-25 VGT-25-S	80	3.15	56	2.20	128	5.04	104	4.09	16	0.63	9	0.35	1/4"	1.090 1.120 1.200	2.40 2.46 2.64
VGT30 VGT-36 VGT-36-S	100	3.94	73	2.87	160	6.30	130	5.12	20	0.79	11	0.43	3/8"	2.200 2.300 2.530	4.85 5.10 5.57
VGT40 VGT-48 VGT-48-S	120	4.72	83	3.26	194	7.64	152	5.99	24	0.94	17	0.67	3/8"	3.690 3.890 4.290	8.13 8.57 9.45

Performance:

Model	Frequency V.P.M. x 1000			Centrifugal force*						Air consumption / Minute					
	2 Bar 29 PSI	4 Bar 58 PSI	6 Bar 87 PSI	2 Bar N	29 PSI LBS	4 Bar N	58 PSI LBS	6 Bar N	87 PSI LBS	2 Bar Ltr.	29 PSI CF	4 Bar Ltr.	58 PSI CF	6 Bar Ltr.	87 PSI CF
VGT-4 VGT-6	14.0 11.5	15.0 12.0	15.0 12.5	133 128	30 29	177 173	40 39	200 209	45 47	34	1.2	57	2.0	83	2.9
VGT-8 VGT-10 VGT-10-S	36.0 27.5 17.0	42.0 35.0 23.0	46.0 37.5 25.0	990 840 650	223 189 146	2060 1390 1350	464 313 304	2910 2400 1950	655 540 439	46	1.6	80	2.8	112	3.9
VGT13 VGT-16 VGT-16-S	26.0 17.0 11.5	30.0 21.5 15.5	33.0 24.0 17.0	1400 1220 1100	315 275 248	2440 2090 1900	549 470 428	3730 3160 2700	839 711 608	120	4.2	200	7.0	290	10.2
VGT20 VGT-25 VGT-25-S	17.0 12.0 8.5	20.0 15.5 11.0	23.0 17.0 13.0	2170 2120 2250	488 477 506	4040 3510 3600	909 790 810	5520 5070 4900	1242 1140 1102	185	6.5	325	11.4	455	15.9
VGT30 VGT-36 VGT-36-S	13.0 8.0 6.1	14.0 10.0 7.2	16.0 13.0 8.3	3380 3290 4100	760 740 922	5430 5360 6200	1222 1206 1395	7540 7190 7500	1696 1618 1688	330	11.5	530	18.5	745	26.0
VGT40 VGT-48 VGT-48-S	7.7 6.0 1.8	8.8 7.5 5.6	9.5 9.7 6.3	4300 4900 0	968 1102 0	7300 7700 7500	1642 1732 1688	9800 10500 12000	2205 2363 2700	425	15.0	700	24.6	970	34.2

- Data obtained with a Kistler 3-axis dynamometer on a heavy laboratory test block and displayed by Kistler control monitor (COMO). Frequency and force will decrease on a less rigid mount. Specifications subject to change without notice or obligation.



1-800-842-7284

1-630-920-9411 (Outside USA & Canada)