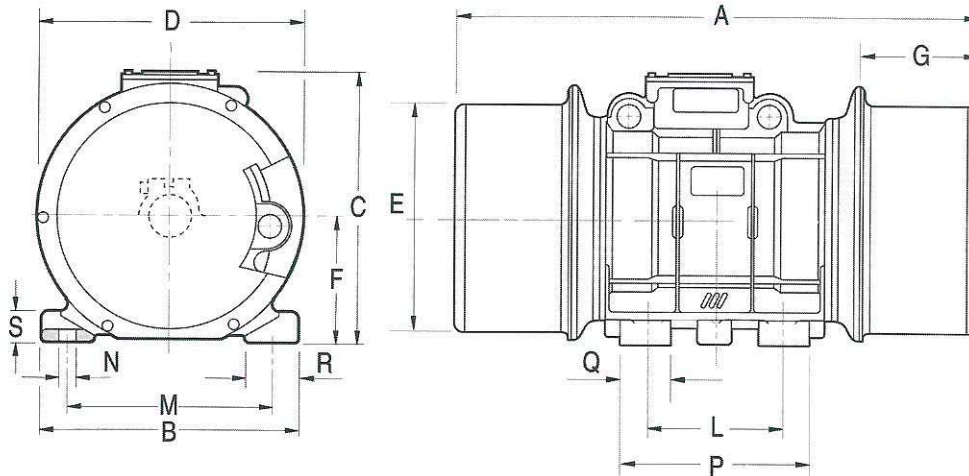


# VE3/9



## 900 RPM Three-Phase

PERFORMANCE DATA							
MODEL	FORCE OUTPUT	UN-BALANCE	POWER OUTPUT	AMP DRAW 460V	AMP DRAW 230V	STARTUP CURRENT MULTIPLIER	WEIGHT
	lbs	in-lbs	hp	Amps	Amps		lbs
VE3/9/1500	1646	72	0.67	1.2	2.4	2.6	125
VE3/9/2000	2405	105	0.80	1.4	2.8	2.7	154
VE3/9/3000	3245	141	1.61	2.3	4.6	3.5	209
VE3/9/5000	5166	225	2.41	3.9	7.8	3.8	304
VE3/9/8000	8140	354	3.22	5.3	10.6	4.6	422
VE3/9/12000	12423	540	6.70	8.8	17.6	3.6	603
VE3/9/14000	15239	667	8.72	10.5	21	3.3	697
VE3/9/15000	15470	673	9.12	11	22	3.6	836
VE3/9/18000	17224	749	9.38	11.2	22.4	3.5	880
VE3/9/21000	21399	930	10.72	13	26	3.2	1034
VE3/9/24000	23923	1040	11.39	13.4	26.8	3.4	1067



DIMENSIONS																
MODEL	A	B	C	D	E	F	G	L	M	N	P	Q	R	S	BOLT HOLE NBR.	BOLT HOLE FRAME
VE3/9/1500	19.21	9.65	10.24	10.16	8.62	4.80	4.21	5.51	7.48	0.67	7.48	1.57	1.77	0.98	4	15-A
VE3/9/2000	21.42	9.65	10.24	10.16	8.62	4.80	5.31	5.51	7.48	0.67	7.48	1.57	1.77	0.98	4	15-B
VE3/9/3000	22.83	10.83	12.20	10.94	9.41	5.20	5.35	6.10	8.86	0.83	8.07	1.97	2.17	1.18	4	20
VE3/9/5000	24.02	12.80	13.54	12.80	11.14	6.18	5.39	6.10	10.08	0.91	8.66	2.17	2.36	1.38	4	30
VE3/9/8000	27.05	13.39	14.72	13.98	12.17	6.77	6.30	7.09	11.02	0.98	9.45	2.36	2.56	1.57	4	50
VE3/9/12000	30.79	15.35	16.26	15.67	13.66	7.52	6.89	7.87	12.60	1.10	11.02	2.95	3.07	1.77	4	70
VE3/9/14000	33.31	15.35	16.26	15.87	13.66	7.52	7.95	7.87	12.60	1.10	11.02	2.95	3.07	1.77	4	70-B
VE3/9/15000	34.65	17.91	17.64	18.11	16.18	8.86	8.07	10.24	14.76	1.26	13.39	3.39	3.27	1.97	6	120-A
VE3/9/18000	34.65	17.52	17.64	18.11	16.18	8.86	8.07	10.24	14.76	1.26	13.39	3.39	3.27	1.97	6	120-A
VE3/9/21000	34.65	17.91	17.64	18.11	16.18	8.86	8.07	10.24	14.76	1.26	13.39	3.39	3.27	1.97	6	120-B
VE3/9/24000	34.65	17.91	17.64	18.11	16.18	8.86	8.07	10.24	14.76	1.26	13.39	3.39	3.27	1.97	6	120-C