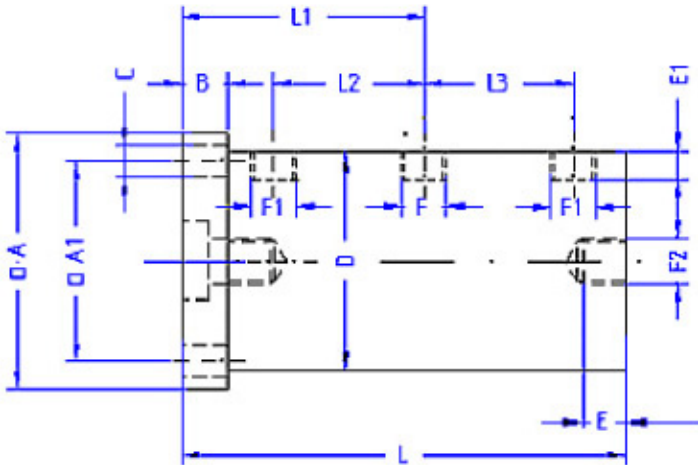


VLB Series Piston Vibrator



Construction:

- 1 - Hard anodized aluminum alloy body
- 2 - Leaded bronze piston
- 3 - Starter spring
- 4 - Air inlet
- 5 - Sound absorbing exhaust system
- 6 - Hard anodized aluminum alloy socket
- 7 - Threaded base for mounting
- 8 - Hard anodized aluminum alloy end cap
- 9 - Air outlet



Performance:

Model	Frequency V.P.M. x 1000			Linear force measured					
	2 Bar 29 PSI	4 Bar 58 PSI	6 Bar 87 PSI	2 Bar N	29 PSI LBS	4 Bar N	58 PSI LBS	6 Bar N	87 PSI LBS
VLB-280	1.85	2.3	2.8	490	110	970	218	1600	360
VLB-500	1.95	2.4	2.7	610	137	1400	315	2170	489
VLB-750	1.8	2.4	2.8	1500	338	2620	590	4270	962

Model	Air consumption / Minute						Notice level	
	2 Bar Ltr.	29 PSI CF	4 Bar Ltr.	58 PSI CF	6 Bar Ltr.	87 PSI CF	dBA*	dBA**
VLB-280	48	1.67	100	3.48	190	6.61	70-77	
VLB-500	90	3.13	160	5.57	270	9.39	73-79	
VLB-750	170	5.91	320	11.13	450	15.65	85-92	

* Data obtained with a Kistler 3-axis dynamometer on a heavy laboratory test block and displayed by Kistler control monitor (COMO). Frequency and force will decrease on a less rigid mount. Specifications subject to change without notice or obligation.

Dimensions in mm:

Model	A	A1	B	C	D	E	E1
VLB-280	90	72	20	8.8	84	13	10
VLB-500	110	90	20	8.8	94	13	10
VLB-750	150	124	19	13	140		10

Model	F	F1	F2	L	L1	L2	L3	Housing kg	Piston kg	Total kg
VLB-280	G1/4"	G1/4"	G1/4"	154	78.5	41.5	41.5	1.350	1.500	3.250
VLB-500	G1/4"	G3/8"	G1/4"	154	78.5	41.5	41.5	1.520	2.150	4.250
VLB-750	G3/8"	G3/8"		156	77.5	35.0	35.0	2.600	4.900	9.400

CHICAGO VIBRATOR PRODUCTS
 WESTMONT IL 60559
 1-800-842-7284 US & CANADA
 1-630-920-9411 INTERNATIONAL