

**Boot-Lift® Railcar Connector**

Plant Name: \_\_\_\_\_

Contact Person: \_\_\_\_\_

Address: \_\_\_\_\_

Telephone: \_\_\_\_\_ Fax: \_\_\_\_\_

City: \_\_\_\_\_

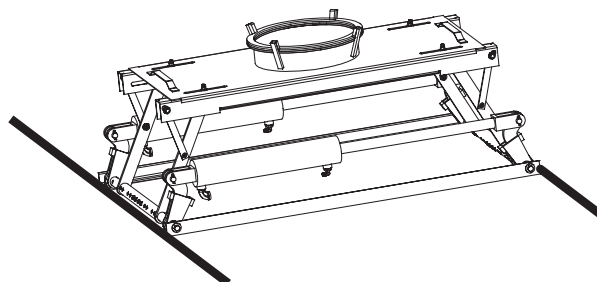
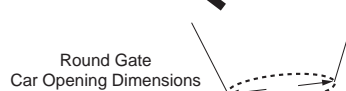
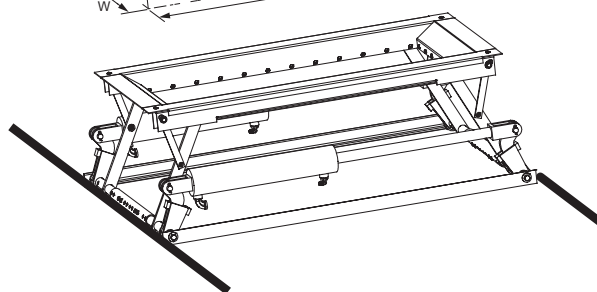
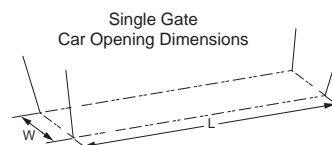
Email: \_\_\_\_\_

State: \_\_\_\_\_ Zip Code: \_\_\_\_\_

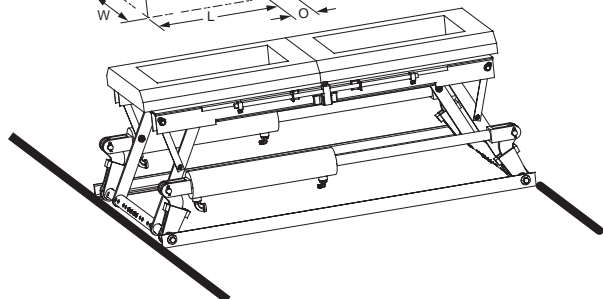
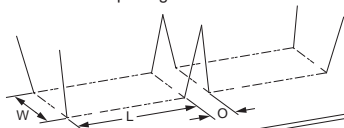
Date: \_\_\_\_\_

**Type of Material:** \_\_\_\_\_**Equipment needs to be Food-Grade:** Yes No**Aligner (moves Boot-Lift® 3-4" either direction parallel to rails):** Pneumatic Manual None**Funnel Grizzly:** AR500 304SS **Opening:** 2" 3" 4"**Vibration needed to aid the flow of material:** Yes No**Railcar Gate Opener needed to assist with gate opening:** Yes No**Railcar Adapter Sheet-Single Gate****Adapter Sheet:** Yes No**Adapter Sheet Material:** Plywood Mild Steel Stainless Steel HDPE (High Density Polyethylene)**Foam Seal:** Standard Cover White Hypalon Wrapped**Railcar Information****Type of Railcar:** Single Gate Double Gate Round Gate**Inner dimensions of railcar discharge gate:****Single Gate:** Length (L) \_\_\_\_\_ x Width (W) \_\_\_\_\_**Double Gate:** Length (L) \_\_\_\_\_ x Width (W) \_\_\_\_\_

Distance between openings (O) \_\_\_\_\_

**Round Gate:** Diameter = \_\_\_\_\_ I.D.

Double Gate  
Car Opening Dimensions



# APPLICATION DATASHEET

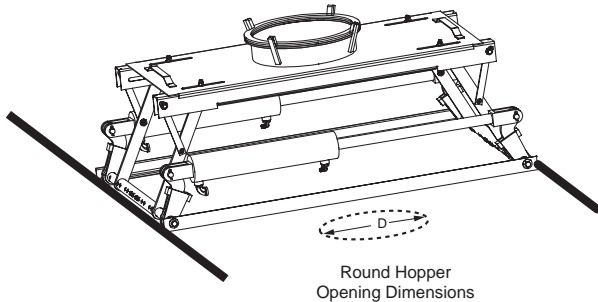
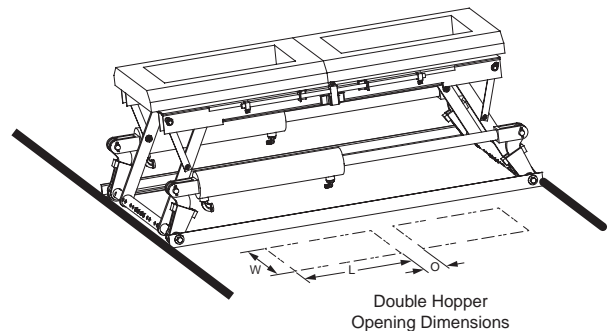
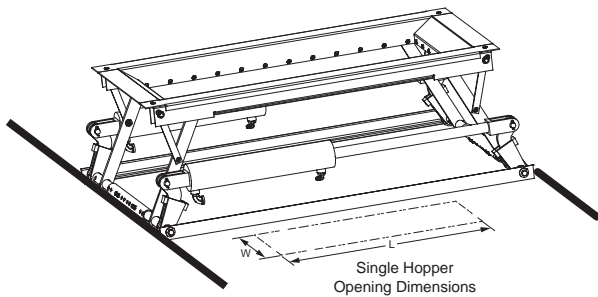
## Receiving Hopper Information

**Boot-Lift® Railcar Connector Model:** SBL-13 (P/N 39589) SBLR-18 (P/N 21055) DBL-30 (P/N 17840)  
 SBL-24 (P/N 19760) SBL-30 (P/N 35038) SBL-35 (P/N 39594) SBL-48 (P/N 39595)

**Boot Material:** Black Vinyl Food Grade Flame Retardant

For new installations or modifications, Martin Engineering strongly recommends dimension H be a 3 in. minimum.

<b>Single openings</b>	Length (L) _____ x Width (W) _____ Bottom of rail to top of hopper (H) _____	
<b>Double openings</b>	Length (L) _____ x Width (W) _____ Distance between openings (O) _____ Bottom of rail to top of hopper (H) _____	
<b>Round openings</b>	Diameter (D) _____ Bottom of rail to top of hopper (H) _____	



**Chicago Vibrator Products**  
 642 Newport Avenue  
 Westmont, IL 60559  
 800-842-7284 | 630-920-9411 (Phone)  
 866-247-7538 Fax  
 Solutions@ChiVib.com | ChicagoVibrator.com

**Submit the completed form  
 via fax to  
 630-920-1395  
 or click here to email  
[Solutions@ChiVib.com](mailto:Solutions@ChiVib.com)**

**Problem Solved™ GUARANTEED!**

Form No. L3729-02/20  
 © Martin Engineering Company 2007, 2020